



# FALL 2021

## Butte Citizens for Preservation and Revitalization

P.O. Box 164

Butte, MT 59703

[buttecpr@gmail.com](mailto:buttecpr@gmail.com)

[www.buttecpr.org](http://www.buttecpr.org)



## Butte Historic Trust Tackles First Project

Butte Historic Trust has acquired its first house to restore!

BHT, a revolving fund created recently to renovate historic, at-risk historic homes in Butte, purchased a home in Uptown at a tax sale in August.

Built around 1900 in the Queen Anne style, the home is laid out with two bedrooms and 1.5 bathrooms. However, the home has been stripped down to the studs and has sat vacant and uninhabitable for years. Since acquiring the building, BHT has done preliminary work, including interior and yard cleanup, installing a ridge cap on the roof to prevent water damage this winter, securing the building, and consulting with trades people regarding the scope and cost of restoration work.

BHT will continue to work on the restoration plan for the house through the winter, with work to begin in the spring. The house needs foundation work and brick repair, in addition to finishing the interior and restoring the exterior.

Once the restoration is completed, the house will be sold with a preservation easement attached to the deed. The preservation easement ensures the historic character of the exterior is retained into the future.

We're excited to bring this building back to life and to see it once again serve as a home for a local family.



Butte Historic Trust house as it looked around 60 years ago, with hopes to restore it to this condition again.

# New Space, New Faces



Butte CPR's office space at 27 West Park Street, shared with CTEC and Butte Historic Trust, will be staffed every Monday to Friday morning. Stop in to get helpful information on historic preservation topics, learn more about what Butte CPR does, or find out about grant opportunities.

In addition to Irene and Emma (see right), the office days will be covered by Lee Whitney on Tuesday and Jason Silvernale on Friday.



Irene Scheidecker is the new administrative coordinator for Butte CPR. She is a great resource on Butte's historic neighborhoods, having retired from the BSB Archives 3 years ago. Irene also has a lot of hands on experience in everything from hardwood floor refinishing to plaster repair to scooping pigeon poop. You can find her in the CPR office every Monday from 10 to 1.



Emma Hall is the administrative coordinator for Butte Historic Trust. She is a fifth generation Butte native with a passion for architecture and historic craftsmanship, especially when it pertains to Butte. She attended the Highlands College of Montana Tech for a degree in Historic Preservation and Carpentry. Emma and her husband, Keegan, are currently restoring the home her grandpa built. You can meet her in the CPR/BHT office every Wednesday and Thursday from 9 to noon.



**Dust to Dazzle 2021** was a great event this year, showcasing several Up-town buildings and raising a record \$9758 net. This is our only fundraiser of the year and we couldn't have done it with-

out our volunteers, visitors, auction item buyers, and sponsors and donors. We especially thank the latter who were NorthWestern Energy, Gretchen Leipheimer, Fort + Hom Developments, Paffhausen Insurance, Regulus Technologies, Bart and Dana Wackerbarth, and Granite Mountain Bank.

## ***Are You an Amazon Shopper?***

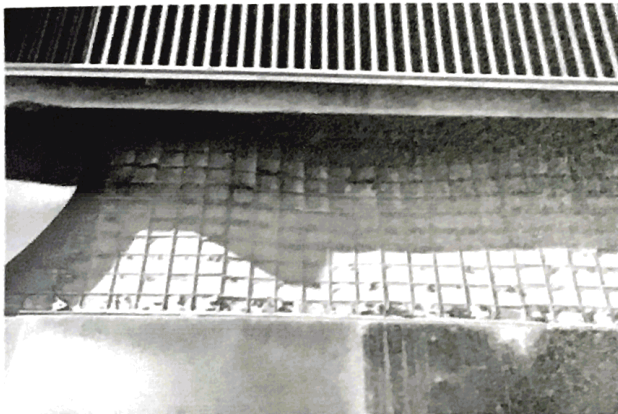
Did you know you can support Butte CPR simply by doing your online shopping? AmazonSmile has exactly the same products, same prices, and same service as Amazon – with one difference. With every eligible purchase you make, 0.5% of the purchase price gets donated to your selected charity or nonprofit.



## GREASY GRIME TO GLITTERING GEM

For the past two years, volunteers have scoured and scraped, rubbed and scrubbed, sanded and polished to restore two beautiful prismatic windows in Uptown Butte. Prismatic glass was used to light the interiors of buildings before electricity was invented. The glass has one side that is smooth and the other side that has sharp ridges that reflect the light that passes through and throws light into dark interiors. The particular glass used in Butte was mostly Luxfer prismatic glass made by a company formed in the late 1800s.

For this project, CPR volunteers restored two windows. The first was at 7 South Montana. The window was covered on the outside with black paint. Although the paint hid the beauty of the window, it actually protected it from the elements to an extent.



Black paint covering the prismatic glass at 7 S. Montana



Installation of the cleaned and restored window at 7 South Montana.

The second window at 15 West Broadway is a wonderful example of how the prismatic glass works to provide light in the interior of the building. This window, made up of three sections, is not only functional but also is stunning because the framing and cross-pieces were plated in copper. Only a personal visit to 15 West Broadway can provide the view necessary to fully appreciate the craftsmanship that went into the construction of the panels. Be sure to do it when the sun is shining.

Funding for this project came from SARTA (the Superfund Advisory and Trust Authority) and the Urban Revitalization Agency.



An interior shot of a completely cleaned and restored panel at 15 West Broadway.



Volunteer scrubbing grime from the 15 West Broadway window.

*The prismatic glass project got its impetus from work done on the Sewell's Hardware building at 221 East Park Street. That project came about when Mary McCormick, Butte's Historic Preservation Officer, saw a similar project elsewhere in the state and secured grant funds from the Montana History Foundation and the Urban Revitalization Agency to clean, repair and restore the 30' x 3' window. Although the structure behind the window does not allow the light to reflect into the interior, the owner has lighted the window so that the Sewell's sign shines through. CPR made a monetary contribution to that project and recruited the volunteers, many of the same volunteers who worked on this project. This is a window that should be seen in person.*

### CPR Board of Directors

Larry Smith, *President*

Mitzi Rossillon, *Treasurer*

Jason Silvernale

Pat Mohan

Noorjahan Parwana

Doug Shidler

Nancy Woodruff

## Membership Time for 2022

Be a part of our historic community! Your membership dollars support Butte CPR's many programs: historic improvement grants, workshops, house tours, salvage, education, and more.

Butte CPR is a non-profit 501(c)(3) and your contribution is fully tax-deductible. We hope you join us!

**NorthWestern**  
**Energy**  
*Delivering a Bright Future*

A *huge* thank you to NorthWestern Energy for the donation of an office copy machine (and supplies to keep it running for a long time). This newsletter is the first of many projects that will make use of the copier, and the savings in printing costs will free up money to go toward our many other projects.

## Christmas Stroll

Please support our Uptown businesses on December 3rd from 5:00 to 9:00. . . and stop by the Butte CPR/ Butte Historic Trust office (27 West Park Street). Say hello, share a warm drink, and maybe even drop off your membership in person!



## Annual Christmas Party

Butte CPR's annual Christmas Party will be held at the Butte Brewery, 465 East Galena, on December 21 at 6:00 p.m. The event is pot luck, so bring a dish to share. Hope to see you there!

