



BUTTE CITIZENS FOR PRESERVATION AND REVITALIZATION

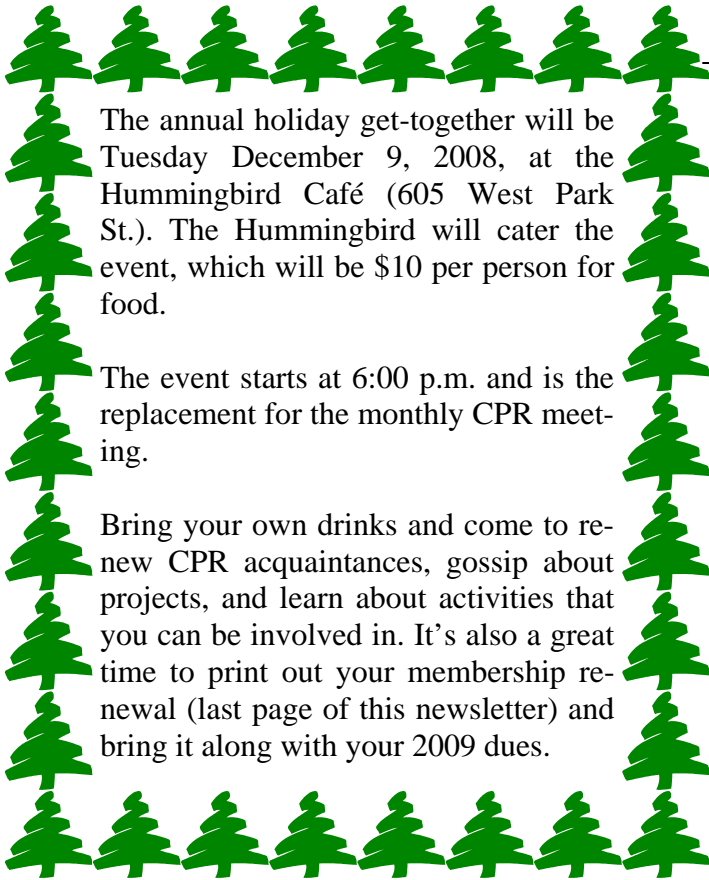
P.O. Box 164, Butte, MT 59703 ❖ 406-490-3216 ❖ www.buttecpr.org

E-NEWSLETTER ❖ DECEMBER 2008

CPR



HOLIDAY GATHERING PLANNED



The annual holiday get-together will be Tuesday December 9, 2008, at the Hummingbird Café (605 West Park St.). The Hummingbird will cater the event, which will be \$10 per person for food.

The event starts at 6:00 p.m. and is the replacement for the monthly CPR meeting.

Bring your own drinks and come to renew CPR acquaintances, gossip about projects, and learn about activities that you can be involved in. It's also a great time to print out your membership renewal (last page of this newsletter) and bring it along with your 2009 dues.

SEND US YOUR SALVAGE STORIES

Butte CPR seeks success stories about our salvage — how have you used recovered Butte materials to enhance your historic project? Before and after pictures would be great!

Send information to website/newsletter editor Dick Gibson (rigibson@earthlink.net).

WORKSHOP SCHEDULE

Hot Water Heat Workshop—Spring 2009
(Second running)

Windows Workshop—Spring 2009
Interior Woodwork Conservation—TBA
How to research your home—TBA



CPR's 2008-09 workshops are supported in part by a sub-grant from the State Historic Preservation Office's Preserve America Grant.



IN THIS ISSUE

Membership & dues • Office Hours & Updates
Salvage Still Available • Elements
Wiki Wants Writers
Membership Renewal Form

OFFICE HOURS & UPDATES

CPR's office hours are **Thursdays from 10 a.m. to 11:30 and 12:00 to 2 p.m.**

Please stop by the office on the second floor of the Museum of Fine Arts—Butte (405 W. Park St.) to



- browse our preservation library (members can borrow),
- discuss your historic home improvement projects,
- learn about tax incentives for preservation,
- get details of upcoming programs that you can volunteer for or participate in,
- join Butte CPR or make a donation,
- and talk to fellow building-huggers.



At long last, the office computer is connected to the Internet. This should expedite communications, grant research, and organizing our membership and mailing lists.



We still seek volunteers to give talks to **Beyond Assisted Living** once a month. Peggy Eustice, the coordinator of these programs, tells us that they were so happy with our presentations, they'd like to open it up to any topic—not just Butte history or things within CPR's focus. **So if you have an interesting family story, a travelogue, just about anything, please contact Dick if you are interested.**

Likewise, if you want to contribute to the Newspaper article series *Brick by Brick*, contact Dick (rigibson@earthlink.net, 723-9639).



RENEWAL TIME: 2009 MEMBERSHIPS

CPR's membership is on a calendar-year basis, with annual dues in January. For the complete list of each level's associated benefits and discounts, please visit our web site: www.buttepr.org/membership.htm. THANKS for your support!

Rooming House Level (students): \$10 annually

Miner's Cottage Level (Individual): \$25 annually

Bungalow Level (Family – up to two active members at one address): \$40 annually

Italianate Level (Supporting – up to two active members at one address) \$80 annually

Queen Ann Level (Underwriter – up to two active members at one address): \$150 annually

Copper King Level (Patron – up to two active members at one address): \$500 annually

Butte Preservationist Level: \$1000 and more annually - up to four active members at multiple addresses

For businesses:

Basic Corporate Membership: \$150 annually

Business Project Supporter: \$25 to \$100 – specific support for smaller projects

Corporate Dust to Dazzle sponsorship: \$95

Historic Improvement Program Grant underwriting: \$750

**CPR Holiday Gathering
Tuesday Dec. 9**

MEMBERSHIP

Reminder: Dues are now payable for 2009. Please refer to the web site, www.buttepr.org, or call Nicole at 406-490-3216 for details of membership levels outlined above. **Dues received after Oct. 1 will apply to 2009 memberships.**

SALVAGE STILL AVAILABLE

The garage sale is over, but we still have plenty of stuff you can buy. Call Robert at 723-1219 to make an appointment. Typical prices:

- doors—\$10-\$40 • trim—50¢/ft • toilets—\$25
- maple flooring—\$1.50/sq ft
- beadboard—\$1/sq ft
- single-pane windows—\$1 • multi-light—\$20
- radiators—\$30 • light globes—\$4
- pine timbers—\$2/ft • door hardware—\$1

Salvage Want List

Several people have joined the list requesting specific materials, including clawfoot tubs (we have some donated, at the old Sears building—needs a work party), water fountain, hairpin fencing, iron fencing, and big slag bricks.



Part of the patterned concrete deck at the site of the Foreman's House, Mountain View mineyard.

WIKI WANTS WRITERS

Virtual Historical Butte is still languishing, although two new editors have made contributions.

Please visit wiki.butenhld.org and contribute!

President: Larry Smith ♦ Vice-President: Andrea Stierle

Treasurer: Mitzi Rossillon ♦ Secretary: Dick Gibson

Board of Directors: Larry Smith, Mitzi Rossillon, Andrea Stierle, Robert Edwards, Carrie Kiely

Public Relations Coordinator: Nicole von Gaza

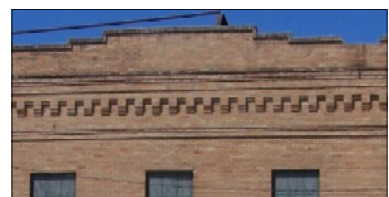
Webmaster & Newsletter Editor: Dick Gibson

Membership Directory: www.buttecpr.org/directory.htm

Would you like to see something in the e-newsletter?

Please send ideas and constructive criticism to Dick at rigibson@earthlink.net.

Butte Citizens for Preservation and Revitalization



BUTTE CPR MEMBERSHIP

NAME _____

Postal Address _____

City, State, Zip _____

Phone _____

e-mail _____ Exclude me from the e-mail list

For 2009: NEW RENEWAL

Individual Membership Levels
(please check amount enclosed):

Rooming House Level (students): \$10 annually

Miner's Cottage Level (Individual): \$25 annually

Bungalow Level (Family – up to two active members at one address): \$40 annually

Italianate Level (Supporting – up to two active members at one address): \$80 annually

Queen Ann Level (Underwriter – up to two active members at one address): \$150 annually

Copper King Level (Patron – up to two active members at one address): \$500 annually

Butte Preservationist Level: up to four active members at multiple addresses: \$1000 and more annually

<p>I'm enclosing an additional donation in the amount of _____.</p> <p>OPTIONAL: Please allocate this donation for the following purpose or memorial:</p> <p>_____</p> <p>_____</p>

Business Membership (provide Business Name on top line above)

Business Membership: Basic—\$150 annually

Involvement: Please indicate any activities for which you'd like to be contacted. No obligation!

Thank YOU!

- Salvage Corps Dust to Dazzle Committee Newsletters
- Stained Glass/Literary Tour Committee Workshops Grants
- Board Newspaper Articles Beyond Assisted Living Programs
- Other (you tell us what you want to be involved in!):

Your ideas: _____

CPR's membership is on a calendar-year basis, with annual dues in January.

Print form and mail payments to: P.O. Box 164, Butte, MT 59703
or bring to the Office (MoFAB, 405 W. Park, Suite 200) during office hours
Thursdays 10-11:30 a.m. and Noon-2:00 p.m. 406-490-3216