



**BUTTE CITIZENS FOR PRESERVATION AND REVITALIZATION**

P.O. Box 164, Butte, MT 59703 ❖ 406-490-3216 ❖ [www.buttecpr.org](http://www.buttecpr.org)

E-NEWSLETTER ❖ MAY 2010

# CPR



## MAY: NATIONAL HISTORIC PRESERVATION MONTH

**T**his year's theme for National Historic Preservation Month is "Old is the New Green!" A focus on sustainability, and the little-known facts that old buildings are often more energy-efficient than new ones, gives us plenty to think about.

Nicole is planning to try to work with Butte's National Center For Appropriate Technology (NCAT) in an Open House forum to get the word out. Watch the web site for time and place.

Also during May, watch for details about a fundraising event at the Copper King Mansion.

We'll be holding a salvage sale May 15, 9 am-1 pm at the Grand Hotel, 124 W. Broadway (south side alley). Recent voluminous salvage has included thousands of square feet of tin ceiling from

the Sears Building (multiple patterns). From the Leonard we have many built-ins including wardrobes and other items, as well as sinks, doors, and woodwork. Some photos on the salvage page of our web site, <http://www.buttecpr.org/salvage2.shtml>.



*Renovation at the Leonard is removing much from the interior, but CPR has salvaged as much as we can in hopes of it finding new homes in Butte.*

---

## COMING IN JUNE

Larry Smith plans to conduct a Brick Repair Workshop on Thursday June 3 and Saturday June 5. Location to be announced. \$5 (and free for CPR members). Phone 491-8623, email [uptownlarry.smith@gmail.com](mailto:uptownlarry.smith@gmail.com).

The sixth annual Dust To Dazzle Tour is scheduled for Saturday June 26. See details on page 3 and watch the web site for updates.

**2010 DUES ARE PAST DUE!  
RENEWAL FORM ON PAGE 6.  
THANKS FOR YOUR SUPPORT!**

### IN THIS ISSUE

Membership & dues • Office Hours & Updates  
D2D • Greek Café Update  
*Builder's Song* • Annual dues form  
Wrecking Ball

# OFFICE HOURS & UPDATES

CPR's office hours: Fridays, 10 a.m.-1 p.m., Saturdays, 10 a.m.-1 p.m.

Please stop by the office on the second floor of the Jacobs House (Granite at Montana St.) to



- browse our preservation library (members can borrow),
- discuss your historic home improvement projects,
- learn about tax incentives for preservation,
- get details of upcoming programs that you can volunteer for or participate in,
- join Butte CPR or make a donation,
- and talk to fellow building-huggers.



Link on CPR home page, <http://www.buttecpr.org>

## MONTANA PRESERVATION 2009



## MONTANA VERNACULAR

vernacular: 1) plain, everyday, ordinary; 2) indigenous, traditional, folk-style; 3) a style of architecture reflecting basic and common techniques, decoration, and materials representative of a particular period and place; 4) architecture without architects.

STATE HISTORIC PRESERVATION OFFICE MONTANA HISTORICAL SOCIETY

Visit the office during office hours and pick up a free copy of the Montana Historical Society Preservation 2009 poster. Check out the VAF Guidebook too — only 50 copies available, at \$20 picked up (\$27 mailed).

## 2010 MEMBERSHIPS

CPR's membership is on a calendar-year basis, with annual dues in January. For the complete list of each level's associated benefits and discounts, please visit our web site: [www.buttecpr.org/membership.htm](http://www.buttecpr.org/membership.htm). THANKS for your support!

**Rooming House Level** (students): \$10 annually

**Miner's Cottage Level** (Individual): \$25 annually

**Bungalow Level** (Family – up to two active members at one address): \$40 annually

**Italianate Level** (Supporting – up to two active members at one address) \$80 annually

**Queen Ann Level** (Underwriter – up to two active members at one address): \$150 annually

**Copper King Level** (Patron – up to two active members at one address): \$500 annually

**Butte Preservationist Level:** \$1000 and more annually - up to four active members at multiple addresses

For businesses:

**Basic Corporate Membership:** \$150 annually

**Business Project Supporter:** \$25 to \$100 – specific support for smaller projects

**Corporate Dust to Dazzle sponsorship:** \$95

**Historic Improvement Program Grant underwriting:** \$750

**Next Meeting  
Tuesday May 11, 2010  
7:00 p.m.  
Jacobs House  
201 W. Granite**

## MEMBERSHIP

**Reminder:** Dues are now payable for 2010. Please refer to the web site, [www.buttecpr.org](http://www.buttecpr.org), or call Nicole at 406-490-3216 for details of membership levels outlined above.

# DUST TO DAZZLE 2010

This year's Dust to Dazzle tour, the sixth annual, will take place on Saturday June 26. Locations are set, and will include the following:

- ◆ 1115 Lewisohn
- ◆ 925 W. Quartz
- ◆ 301 W. Granite
- ◆ 630 W. Silver
- ◆ 401 W. Boardman
- ◆ 32-40 E. Granite (Sears Bldg.)

The program will include a tea at 105 N. Excelsior (Ryan Mansion).

Details on locations for buying advance tickets will be forthcoming. In addition, we anticipate making ticket purchase available through our website using our PayPal account.

Proceeds benefit Butte CPR's many projects, most notably its Historic Improvement Project fund, which has provided awards of

more than \$25,000 to property owners for improvements. While the funds raised will be a welcome assist, the principal reasons for the tour are to inspire people to purchase and restore historic buildings in Butte (now, together with Anaconda, the nation's largest National Historic Landmark District), to show what great results can be achieved while bringing an historic building back from the brink, and to meet the varied and wonderful people who enjoy doing it. We hope that tour attendees and volunteers will find a new neighbor!



*Connell House, 301 W. Granite*

**President: Larry Smith ◆ Vice-President: Carrie Kiely**

**Treasurer: Jean Abrams ◆ Secretary: Dick Gibson**

**Board of Directors: Larry Smith, Mitzi Rossillon, Robert Edwards, Carrie Kiely, Mark Reavis, Mike Hogan, Wendy Ward**

**Public Relations Coordinator: Nicole von Gaza**

**Webmaster & Newsletter Editor: Dick Gibson**

**Membership Directory: [www.buttecpr.org/directory.htm](http://www.buttecpr.org/directory.htm)**

**Would you like to see something in the e-newsletter?**

**Please send ideas and constructive criticism to Dick at [rigibson@earthlink.net](mailto:rigibson@earthlink.net).**

*Butte Citizens for Preservation and Revitalization*

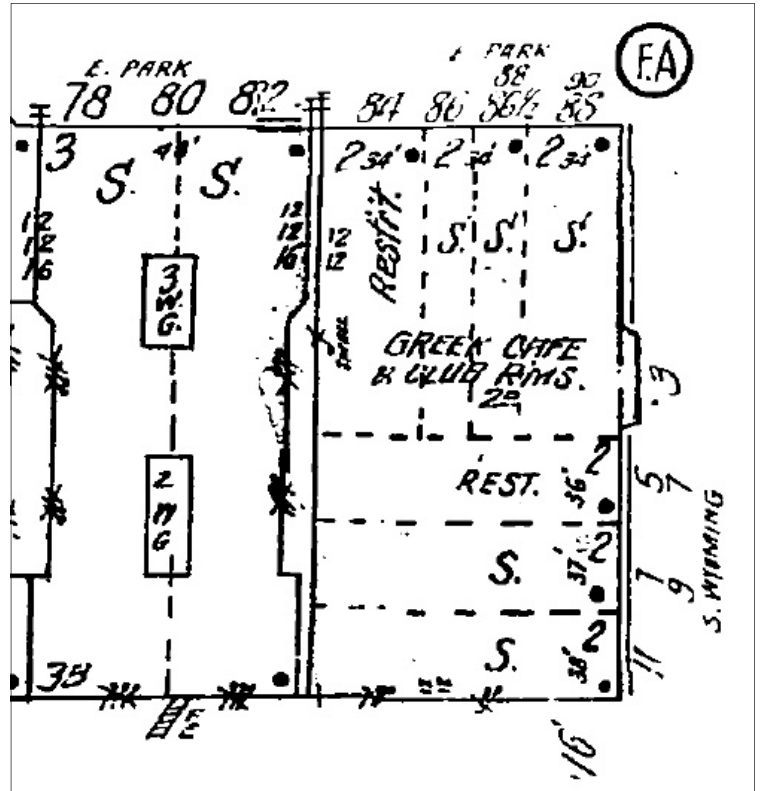


# GREEK CAFÉ UPDATE

Nicole reports that the URA has formally approved the matching \$95,000 grant, which, added to the National Park Service award of \$30,000, will put a roof on the building.

Nicole coordinates the effort with Butte-Silver Bow city-county, through a Technical Review Committee (TRC) including Historic Preservation Officer Jim Jarvis. The TRC met, and will likely recommend that Phase I (the roof) and Phase II (cleanup, floor joists, etc., supported by the stimulus grant) be com-

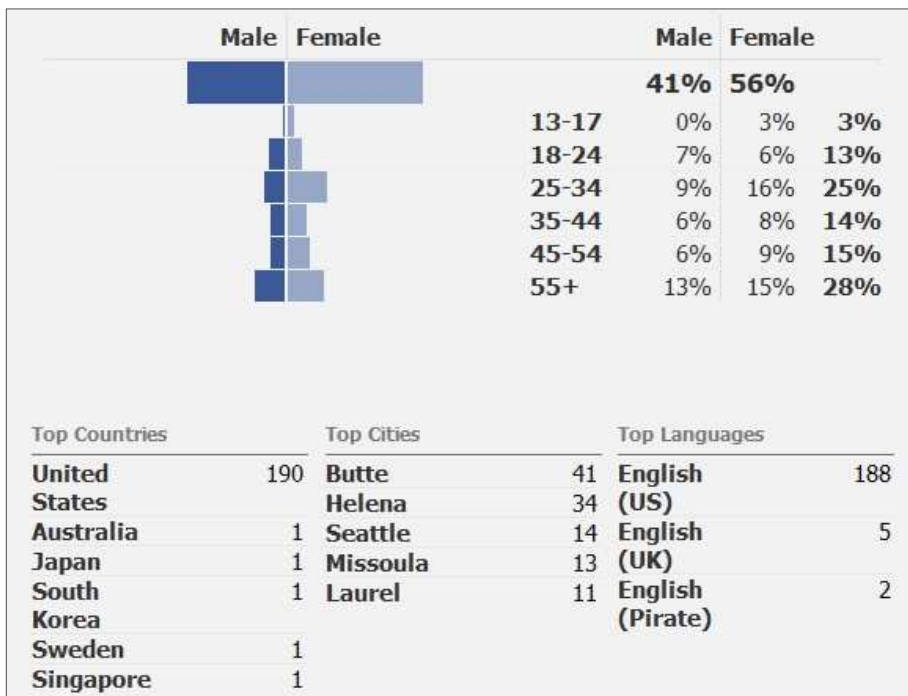
bined to expedite the work including architectural planning by Beaudette Consulting Engineers, our chosen architect.



## FACEBOOK UPDATE

Since its inception in January, our Facebook page has grown to include 197 fans.

A look at the demographics of the Facebook fan base is given below. Access the Facebook page through a link on our web site home page, [www.buttecpr.org](http://www.buttecpr.org).



Above: Snippet of Sanborn Map for 1911 showing the multiple uses in the block at the corner of Park and Wyoming, which we refer to as the "Greek Café" now.

## Builder's Song

I saw them tear a building down,  
A gang of men in a busy town.  
With a ho-heave-ho and a lusty yell  
They swung a beam and the side wall fell.

I asked the foreman, "Are these men skilled,  
As the men you would hire if you had to build?  
He laughed and said, "No indeed;  
Just common labor is all I need.  
I can easily wreck in a day or two  
What builders have taken years to do."

I asked myself as I went my way,  
Which of these roles have I tried to play?  
Am I builder who works with care,  
Measuring life by the rule and square,  
Or am I a wrecker who walks the town  
Content with the labor of tearing down?"

—*Author unknown (pre-1941)*



*Ryan Mansion (105 N. Excelsior), owned by Peggy Guccione, will be the venue for the tea during the Dust to Dazzle tour June 26.*

# BUTTE CPR MEMBERSHIP

NAME \_\_\_\_\_

Postal Address \_\_\_\_\_

City, State, Zip \_\_\_\_\_

Phone \_\_\_\_\_

e-mail \_\_\_\_\_  Exclude me from the e-mail list

For 2010:  NEW  RENEWAL

Individual Membership Levels  
(please check amount enclosed):

Rooming House Level (students): \$10 annually

Miner's Cottage Level (Individual): \$25 annually

Bungalow Level (Family – up to two active members at one address): \$40 annually

Italianate Level (Supporting – up to two active members at one address): \$80 annually

Queen Ann Level (Underwriter – up to two active members at one address): \$150 annually

Copper King Level (Patron – up to two active members at one address): \$500 annually

Butte Preservationist Level: up to four active members at multiple addresses: \$1000 and more annually

I'm enclosing an additional donation in the amount of \_\_\_\_\_.

OPTIONAL: Please allocate this donation for the following purpose or memorial:

\_\_\_\_\_

\_\_\_\_\_

**Business Membership (provide Business Name on top line above)**

**Business Membership: Basic—\$150 annually**

Involvement: Please indicate any activities for which you'd like to be contacted. No obligation!

Thank YOU!

- Salvage Corps     Dust to Dazzle Committee     Newsletters
- Stained Glass/Literary Tour Committee     Workshops     Grants
- Board     Newspaper Articles     Beyond Assisted Living Programs
- Other (you tell us what you want to be involved in!):

Your ideas: \_\_\_\_\_

\_\_\_\_\_

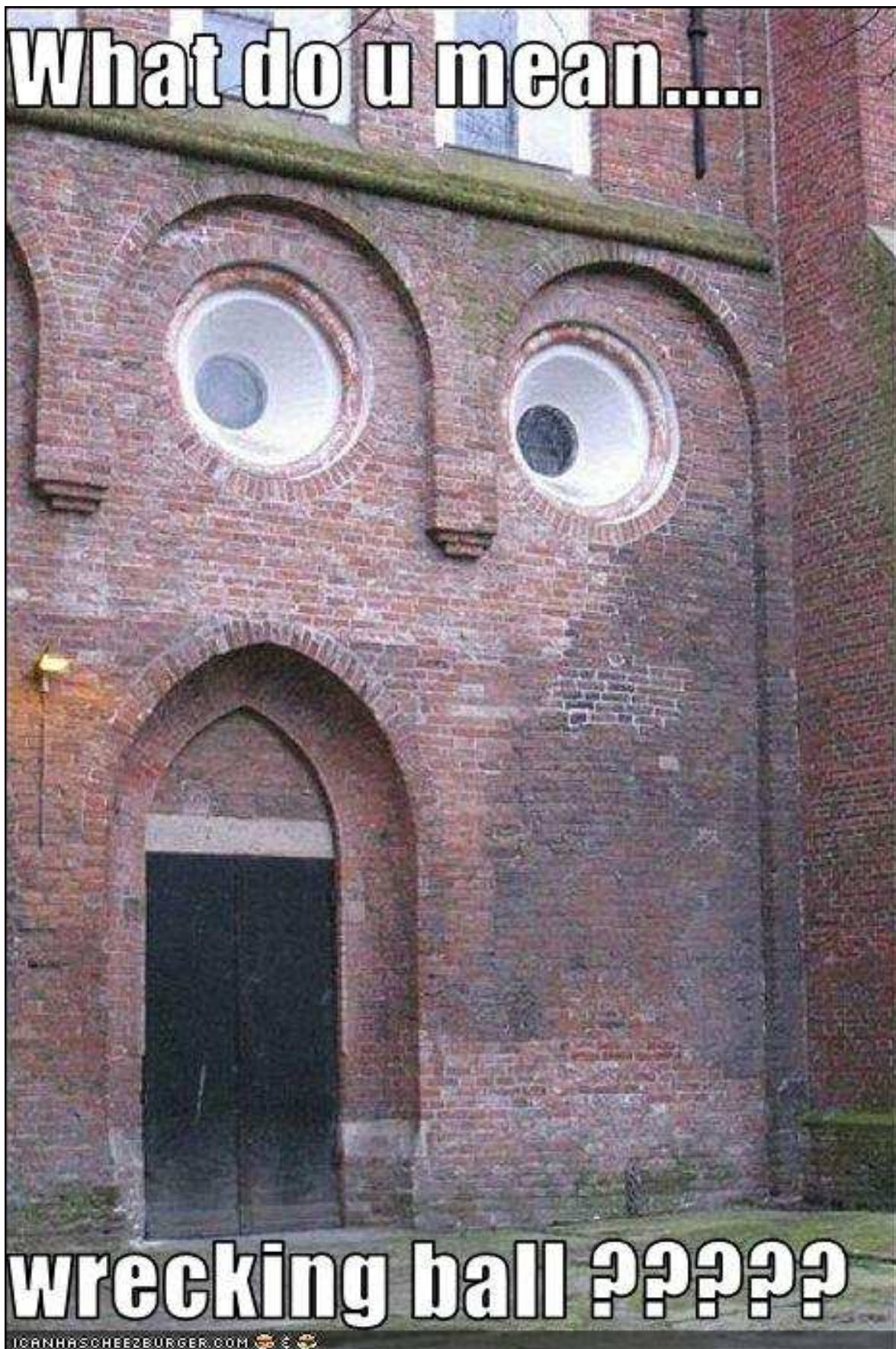
CPR's membership is on a calendar-year basis, with annual dues in January.

Print form and mail payments to: P.O. Box 164, Butte, MT 59703

info@buttecpr.org • 406-490-3216

Payable to: Butte CPR

**What do u mean.....**



**wrecking ball ??????**

ICANHASCHEEZBURGER.COM