



BUTTE CITIZENS FOR PRESERVATION AND REVITALIZATION

P.O. Box 164, Butte, MT 59703 ❖ 406-490-3216 ❖ www.buttecpr.org

E-NEWSLETTER ❖ JANUARY 2009

CPR



2008 IN REVIEW: THANK YOU!

In this year-end issue we summarize accomplishments and express our appreciation to our supporters.

DONATIONS

Curt Buttons: \$10,000 for the Dumas (late 2007, + \$16,500 earlier)—Butte Preservationist Member

US Bank Foundation: \$1,000 for the 2009 Historic Improvement Grant Program

Silver Bow Software: Web site hosting

Butte Chamber of Commerce & Denny Dutton: Support for trolley ride on stained glass/literary tour

Frank & Ristene Hall: \$100

Kurt Krueger: \$100

Office rent: 2 months' support each from Andrea Stierle & Carrie Kiely, one month each from Nicole von Gaza & Dick Gibson

RTI: Domain name registration

Dust to Dazzle sponsors:

- ◆ All About Lights
- ◆ Butte Insulation
- ◆ Triple-S Building Center
- ◆ Uptown Butte Glass Works
- ◆ NorthWestern Energy
- ◆ MT Tech College of Technology
- ◆ BSB Historic Preservation Office

Dozens of volunteers:

- ◆ Board & Officers
- ◆ Dust to Dazzle tour
- ◆ Stained Glass-Literary tour
- ◆ Protect-a-Gate program
- ◆ Brochure writing
- ◆ Web site maintenance
- ◆ Virtual Historic Butte
- ◆ Salvage management and sales
- ◆ Archives & other salvage operations
- ◆ Brick Workshop
- ◆ Hot Water Heat Workshop
- ◆ Windows Workshop planning
- ◆ HIP grant application review
- ◆ Grant applications
- ◆ Everything else we do

**2008
VALUE OF
DOCUMENTED
VOLUNTEER
HOURS:
\$37,101**

In Memory of Jim Warner

Don & Irene Scheidecker
Janet & Gary Beals
GCM Services
Joan Brownell & Burton Williams
Robert & Dolores (Warner) Ferguson
James & Kelly Rose
Jeanette Barnes
Roberta Stauffer
Butch Gerbrandt & Gretchen Geller
Patricia White
Bill & Marissa Newman
Dick Gibson
Priscilla Wegars
Janet Sperry

2008 IN REVIEW: ACCOMPLISHMENTS

- ◆ Using **Montana Cultural Trust C&A Grant** (\$10,000 over two years) we opened an office in the MoFAB and hired a quarter-time Public Relations Coordinator
- ◆ CPR awarded \$3,650 in **Historic Improvement Program grants** to 6 property owners
- ◆ Coordinated successful efforts to perform stop-gap repairs on **roof and interior masonry** at Dumas (a \$38,000 project)
- ◆ Received Uptown Revitalization Agency 25% matching grants for **Dumas** work
- ◆ Presentations by 4 Butte CPR members at **National Summit of Mining Communities**
- ◆ Received **SHPO Preserve America sub-grant** to support workshops
- ◆ Two successful **Brick Workshops**
- ◆ Successful **Hot Water Heat Workshop**
- ◆ Multiple activities as part of **National Historic Preservation Month** (May)
- ◆ Successful **Dust to Dazzle** and **Stained Glass—Literary tours**
- ◆ **Protect-a-Gate** program continues
- ◆ Continued manpower support to planning **Vernacular Architecture Forum** (June 2009)
- ◆ Continued **Virtual Historic Butte** project, now with 300+ entries started
- ◆ Multiple salvage operations at **Butte Archives building**
- ◆ **30 articles published** in weekly series in *Montana Standard*
- ◆ 6 monthly presentations to **Beyond Assisted Living** homes
- ◆ **Salvage Garage Sale** raised about \$3,000
- ◆ Presentations to local **Kiwanis and Rotary Clubs**
- ◆ **Web site** revision Dec. '08: new navigations system and approximately 65 pages in the site
- ◆ Members worked with **Historic Preservation Commission** in an unsuccessful effort to save a contributing property on Silver Street



Stabilizing the Dumas was Butte CPR's biggest project ever in dollar value.

CPR GROWTH AS MEASURED BY ANNUAL EXPENSES

2003 - \$4742
 2004 - \$1536
 2005 - \$3205
 2006 - \$7536
 2007 - \$28,034
 2008 - \$27,185

THANKS TO ALL OUR 2008 MEMBERS

Special recognition and thanks are extended to our

Italianate (\$80) members:

Janet & Gary Beals
 Joan Brownell & Burton Williams
 Vernon & Barbara Griffiths
 Mitzi Rossillon
 Frank & Kathy Taras (Finlen Hotel)

Queen Anne (\$150) Members:

Barbara Gregovich & Brice Boedecker
 Donald & Brett Kronenberger
 Michael and Linda Ryan (2009)
 Don & Irene Scheidecker
 Larry & Debbie Smith

Business Members:

Dixon & Toni Robison —
 Advanced Dermatology (Butte)
 Richard Godbey —
 Chemical Lime (Henderson, NV)
 Jennifer Petersen —
 GCM Services (Butte)
 Dick Gibson —
 Gibson Consulting tour guide (Butte)
 Brad O'Neill —
 O'Neill Group (Blaine, WA)

Bungalow Level

Jeanette Barnes
 Sheri & Joel Broudy
 Justine Conlan & Erick Vines
 Barb & Denny Dutton
 Robert & Dolores Ferguson
 Butch Gerbrandt & Gretchen Geller
 Tom & Linda Hurlock
 John Jakupcak & Mitch Werner
 Suzzann Nordwick
 Noorjahan Parwana & Mark Sylverson
 Kelly & James Rose
 James J. Shive
 Mike & Debbie Stickney
 Ed Stupka
 Nicole von Gaza & Russ Hansen
 Darcel & Josh Yarrington



Miner's Cottage Level

Sharon Amundsen
 Dick Berg
 Roger Brown
 Donna Ritchie Capps
 Kathy Carlson
 Nola Casady
 Sandra Champlin
 Ellen & Gordon Crain
 Mary Creech
 Jan Cronquist
 Julie Crowley
 Madeline Dunn
 Jana Faught
 Steve Foreman
 Harold P. Godtland
 Peggy Guccione
 Elizabeth Hamann
 Phyllis Hargrave
 Carol Link
 Mary McCormick
 Karen McDermott
 Jim Morgan
 Marissa Newman
 Dianna Porter
 Fred Quivik
 Ernie Richards
 Toni Seccomb
 Cindi Shaw
 Janet Sperry
 Bobbi Stauffer
 Andrea Stierle
 Priscilla Wegars
 Patricia White
 Lee and Steve Whitney
 Bryan Woodford
 Charlie Worley
 Anonymous



Grants Received:

1. Montana Cultural Trust—Operational Support (\$10,000 over 2 yrs)
2. Montana State Historic Preservation Office—
 Preserve America sub-grant for workshops (\$4,300)
3. Butte-Silver Bow Urban Revitalization Agency—25% match
 for Dumas projects
4. US Bank Foundation (\$1,000 for HIP Awards)

MONTANA CULTURAL TRUST
 Partial funding for this project was provided by Montana's Cultural Trust.



BSB URA

FINANCIAL REPORT 2008

From Treasurer, Mitzi Rossillon

Beginning Balance:

Checking	\$ 9,444.72
Certificate of Deposit	5,839.14
<i>total</i>	\$ 15,283.86

Receipts

dues	\$ 3,605.00
donations	11,867.52
Dust-to-Dazzle ticket sales, sponsors	2,633.25
grants	10,727.40
<small>(Cult. Trust \$5225.00; URA \$3694.00; US Bank Found. \$1000.00; Preserve Am \$808.40)</small>	
stained glass booklet sales	165.00
salvage sale	3,844.26
interest on CD	169.16
glass/arts tour	245.00
workshop fees	200.00
Christmas party	200.00
miscellaneous	40.33
<i>Total receipts:</i>	\$33,691.92

Expenses

Public Relations Coord. contract	\$ 6,097.50
rent, phone, internet	895.00
office supplies/ post office	769.25
Historic Improvement Program (grant payments)	2,100.00
Dust-to-Dazzle tour expenses	1,240.35
workshop expenses	989.77
Dumas repairs	14,776.00
bank/PayPal charges	25.85
other	365.95
<i>Total expenses:</i>	\$ 27,259.67

Ending Balance:

Checking	\$ 7,207.81
Certificate of Deposit	14,508.30
<i>total</i>	\$ 21,716.11

WHAT YOUR MEMBERSHIP AND DONATIONS MAKE POSSIBLE

Advertising & Promotion (posters, tickers to events, etc.) • office supplies, postage, e-mail, computer peripherals beyond those donated • HIP Grants (the most ever \$\$ in 2008) • Dumas work not covered by grants and other donations • copying and printing costs (Annual Report, membership flyers, Uptown Historian, property owner's guide, etc.) •

CPR representation via the P.R. Coordinator at city-county committee meetings • Awards • supplies for Protect-a-Gate program • matching \$ for external grants

NEXT CPR MEETING
Tuesday Jan. 13
7:00 p.m.
MoFAB, 3rd Floor
405 W. Park St.

COMING at the
 JANUARY MEETING:
 Elections for Board & Officers
 Contact Larry Smith if you
 are interested in serving.
 Board is elected by majority of members attending
 January meeting; officers are elected by the Board.

Also at the January meeting:
 Discussions of plans, goals, events, activities and
 more for the coming year. Your thoughts and ideas
 would be MOST welcome!

BUTTE CPR MEMBERSHIP

NAME _____

Postal Address _____

City, State, Zip _____

Phone _____

e-mail _____ Exclude me from the e-mail list

For 2009: NEW RENEWAL

Individual Membership Levels
(please check amount enclosed):

Rooming House Level (students): \$10 annually

Miner's Cottage Level (Individual): \$25 annually

Bungalow Level (Family – up to two active members at one address): \$40 annually

Italianate Level (Supporting – up to two active members at one address): \$80 annually

Queen Ann Level (Underwriter – up to two active members at one address): \$150 annually

Copper King Level (Patron – up to two active members at one address): \$500 annually

Butte Preservationist Level: up to four active members at multiple addresses: \$1000 and more annually

<p>I'm enclosing an additional donation in the amount of _____.</p> <p>OPTIONAL: Please allocate this donation for the following purpose or memorial:</p> <p>_____</p> <p>_____</p>

Business Membership (provide Business Name on top line above)

Business Membership: Basic—\$150 annually

Involvement: Please indicate any activities for which you'd like to be contacted. No obligation!

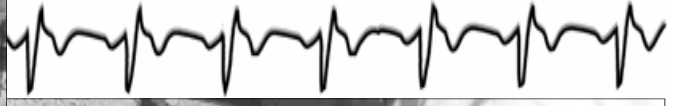
Thank YOU!

- Salvage Corps Dust to Dazzle Committee Newsletters
- Stained Glass/Literary Tour Committee Workshops Grants
- Board Newspaper Articles Beyond Assisted Living Programs
- Other (you tell us what you want to be involved in!):

Your ideas: _____

CPR's membership is on a calendar-year basis, with annual dues in January.

Print form and mail payments to: P.O. Box 164, Butte, MT 59703
or bring to the Office (MoFAB, 405 W. Park, Suite 200) during office hours
Thursdays 10-11:30 a.m. and Noon-2:00 p.m. 406-490-3216



CPR Annual Report 2008



**Butte Citizens for Preservation
& Revitalization**
P.O. Box 164 • Butte, MT 59703
www.buttecpr.org

To: